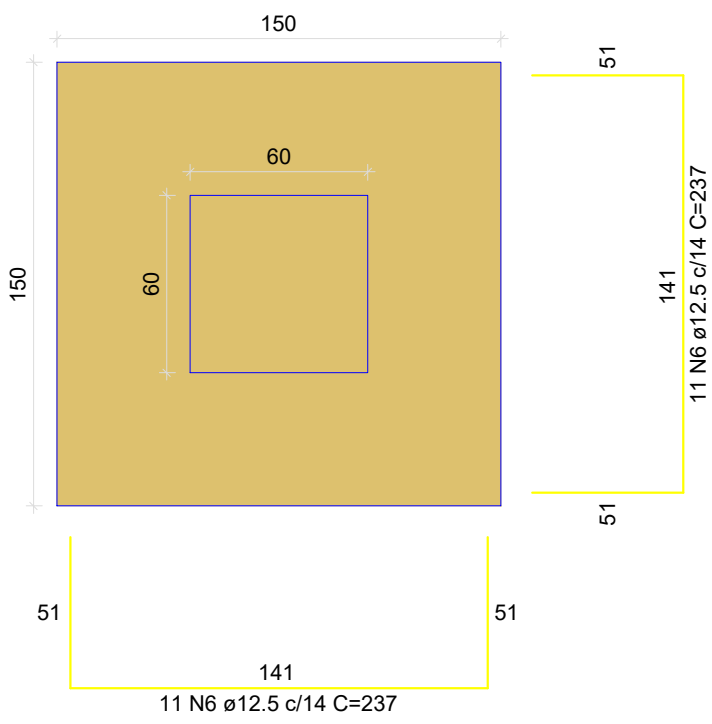


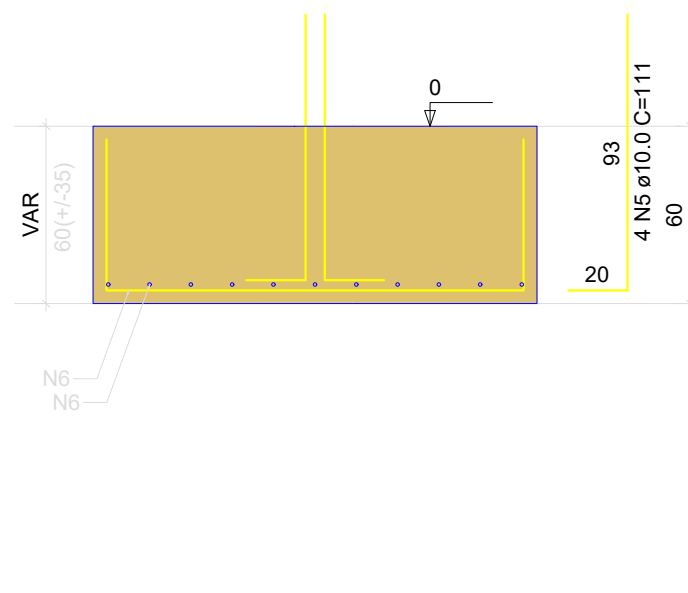
S25

PLANTA
ESC 1:25

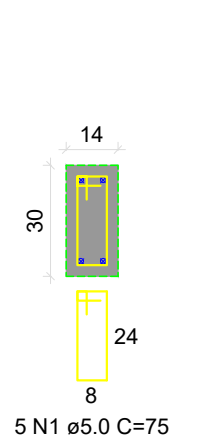


Solo com capacidade de suporte > 2.50 kgf/cm²
Solo compactado sobre a sapata
peso específico > 1600.00 kgf/m³

CORTE
ESC 1:25

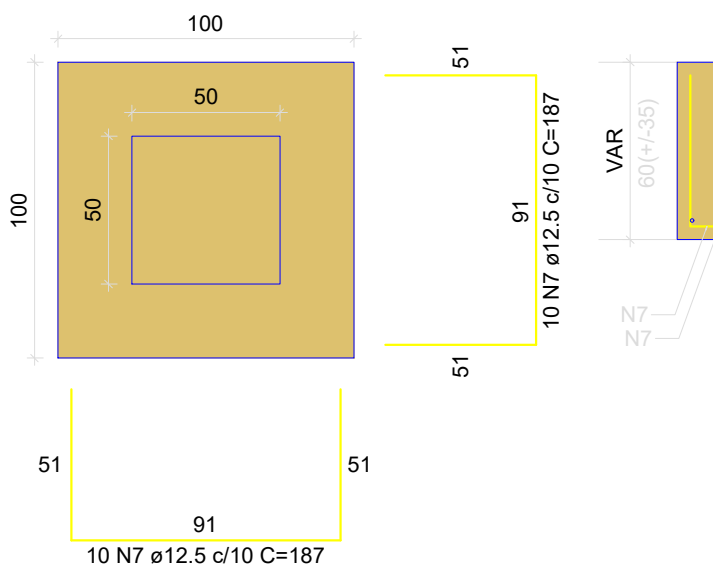


DETALHE DO PILAR
ESC 1:20



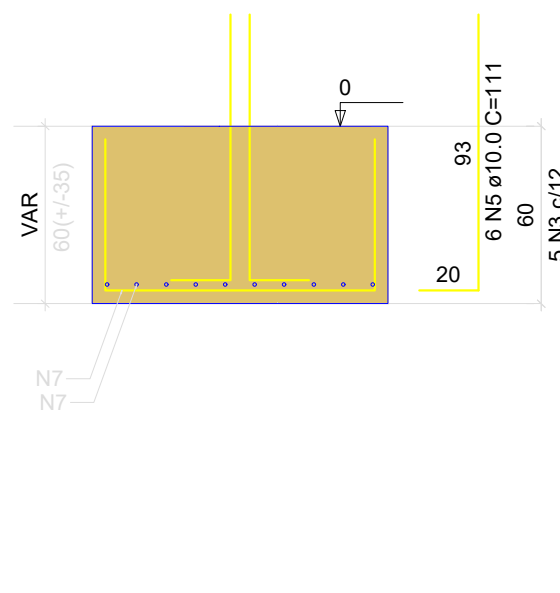
S26

PLANTA
ESC 1:25

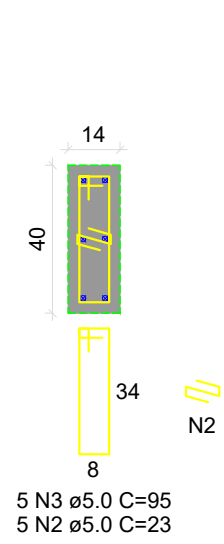


Solo com capacidade de suporte > 2.50 kgf/cm²
Solo compactado sobre a sapata
peso específico > 1600.00 kgf/m³

CORTE
ESC 1:25

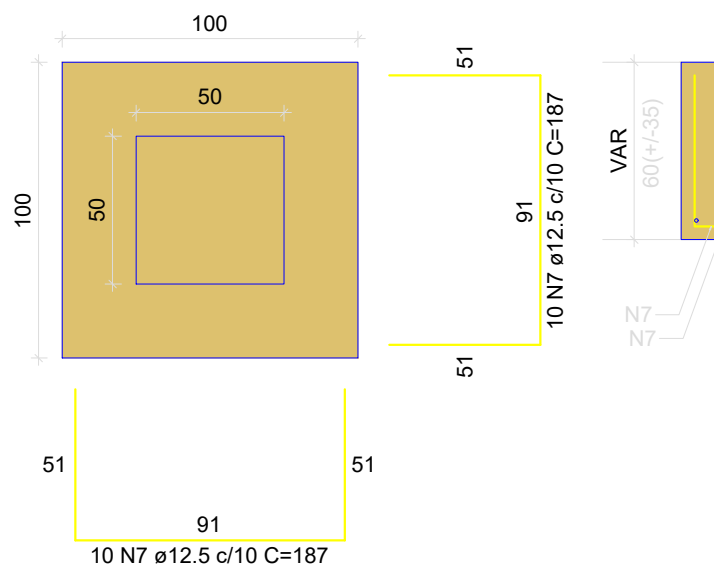


DETALHE DO PILAR
ESC 1:20



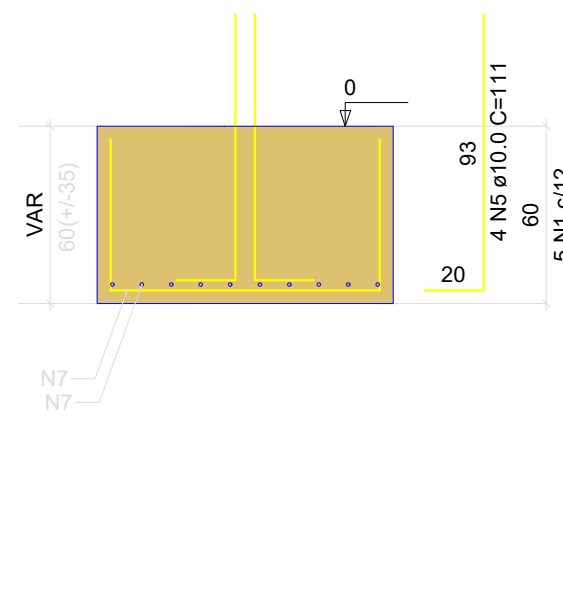
S27

PLANTA
ESC 1:25

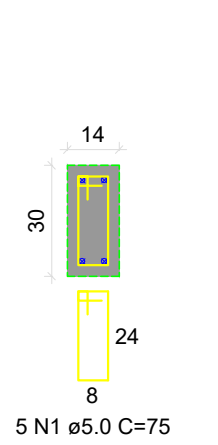


Solo com capacidade de suporte > 2.50 kgf/cm²
Solo compactado sobre a sapata
peso específico > 1600.00 kgf/m³

CORTE
ESC 1:25



DETALHE DO PILAR
ESC 1:20



RELAÇÃO DO AÇO

AÇO	N	DIAM (mm)	QUANT	C.UNIT (cm)	C.TOTAL (cm)
CA60	1	5.0	45	75	3375
S25	2	5.0	5	23	115
S28	3	5.0	5	95	475
S31	4	5.0	10	63	630
S34	5	10.0	50	111	5550
	6	12.5	44	237	10428
	7	12.5	200	187	37400

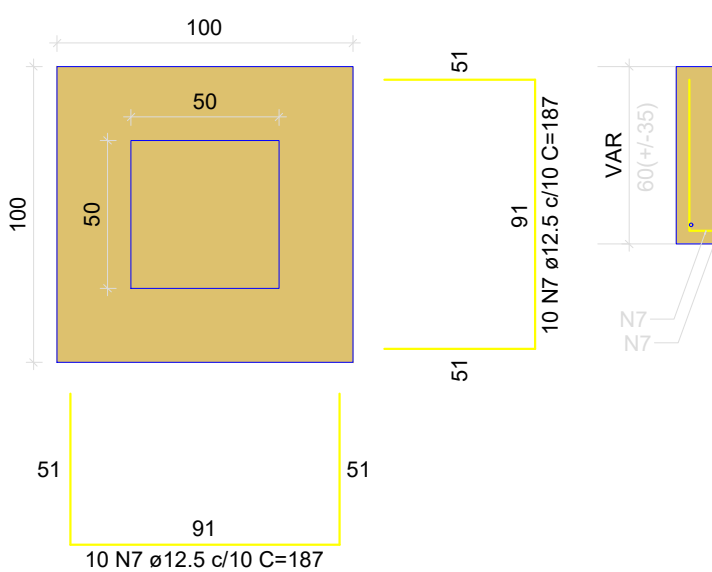
RESUMO DO AÇO

AÇO	DIAM (mm)	C.TOTAL (m)	PESO + 10% (kg)
CA50	10.0	55.5	37.6
CA60	12.5	478.3	506.8
PESO TOTAL (kg)			
CA50	544.5		
CA60	7.8		

Volume de concreto (C-30) = 8.70 m³
Área de forma = 31.20 m²

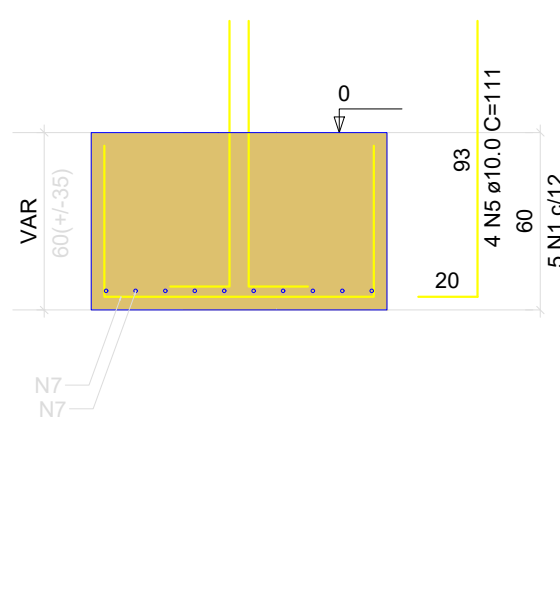
S28

PLANTA
ESC 1:25

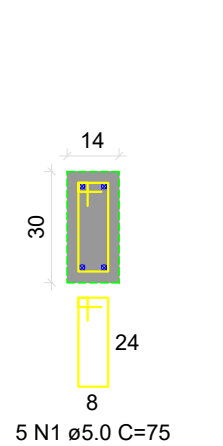


Solo com capacidade de suporte > 2.50 kgf/cm²
Solo compactado sobre a sapata
peso específico > 1600.00 kgf/m³

CORTE
ESC 1:25

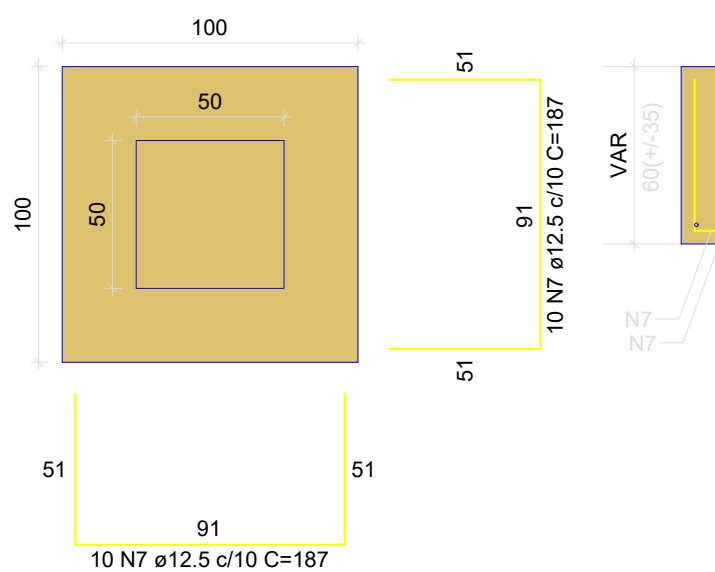


DETALHE DO PILAR
ESC 1:20



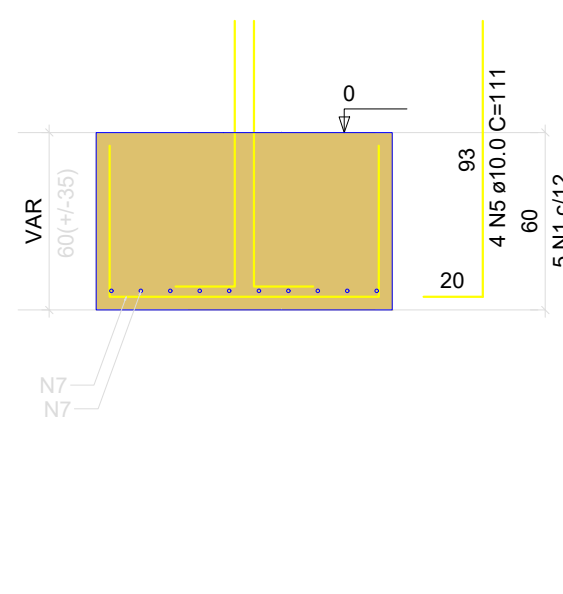
S29

PLANTA
ESC 1:25

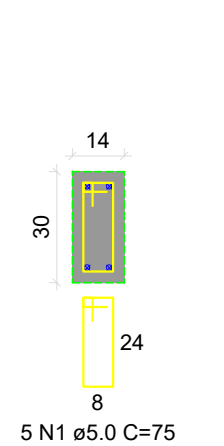


Solo com capacidade de suporte > 2.50 kgf/cm²
Solo compactado sobre a sapata
peso específico > 1600.00 kgf/m³

CORTE
ESC 1:25

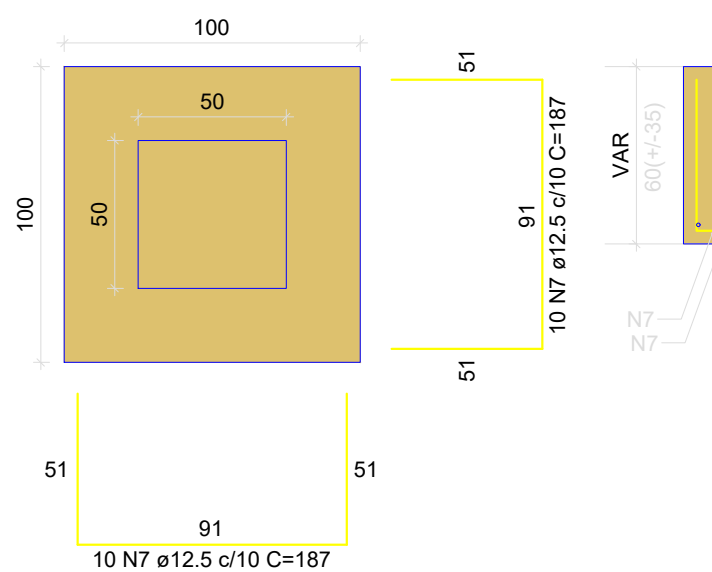


DETALHE DO PILAR
ESC 1:20



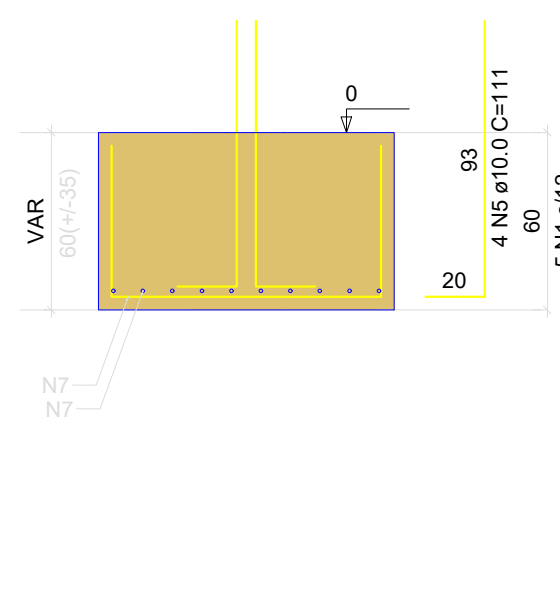
S30

PLANTA
ESC 1:25

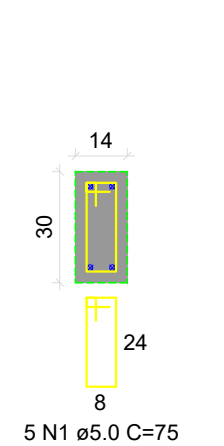


Solo com capacidade de suporte > 2.50 kgf/cm²
Solo compactado sobre a sapata
peso específico > 1600.00 kgf/m³

CORTE
ESC 1:25

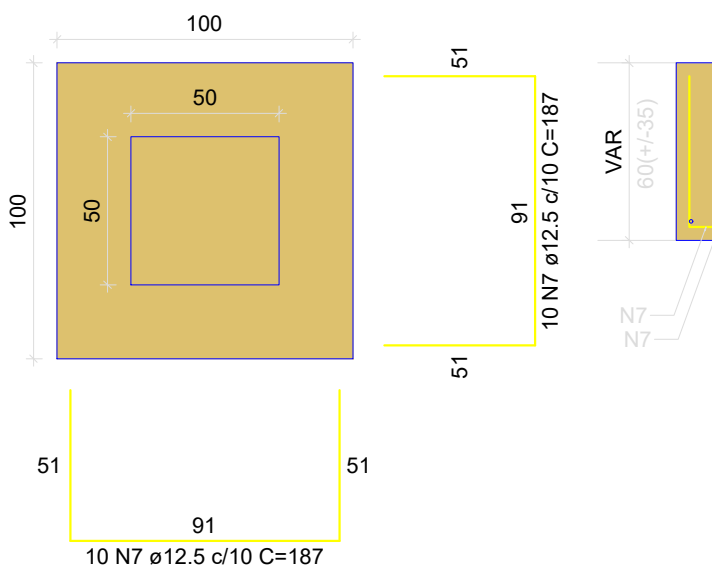


DETALHE DO PILAR
ESC 1:20



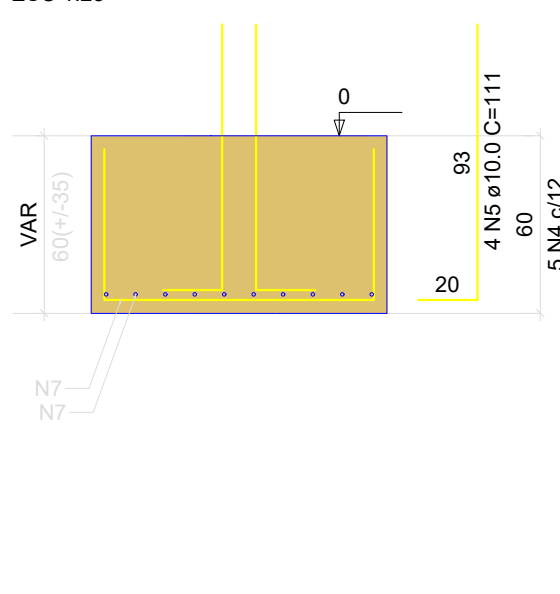
S31

PLANTA
ESC 1:25

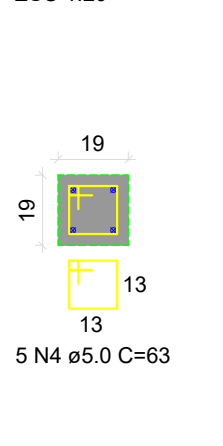


Solo com capacidade de suporte > 2.50 kgf/cm²
Solo compactado sobre a sapata
peso específico > 1600.00 kgf/m³

CORTE
ESC 1:25

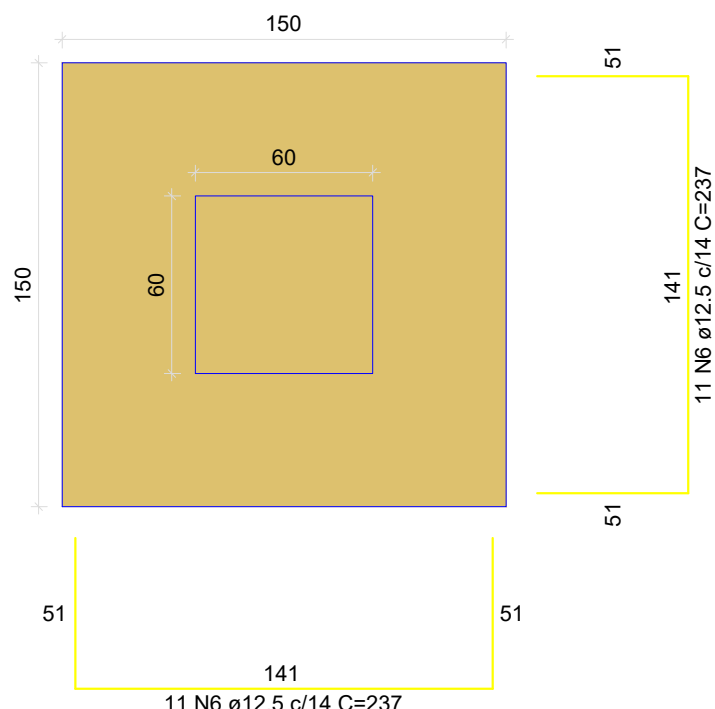


DETALHE DO PILAR
ESC 1:20



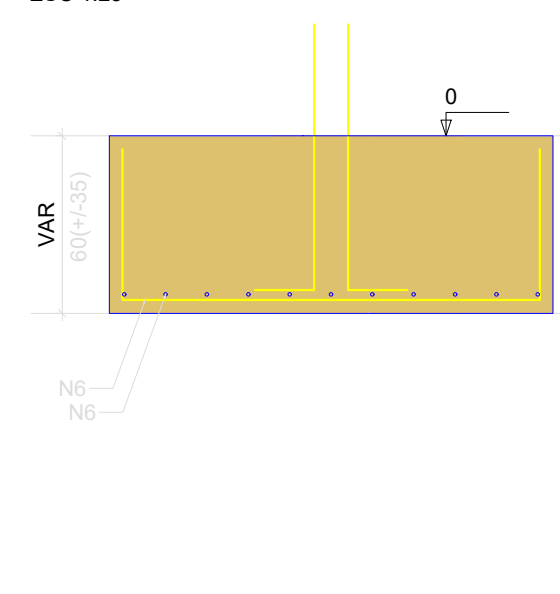
S32

PLANTA
ESC 1:25

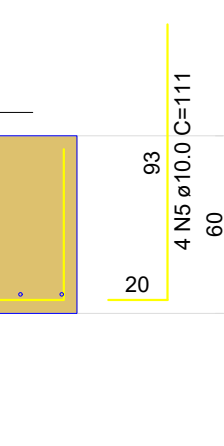


Solo com capacidade de suporte > 2.50 kgf/cm²
Solo compactado sobre a sapata
peso específico > 1600.00 kgf/m³

CORTE
ESC 1:25

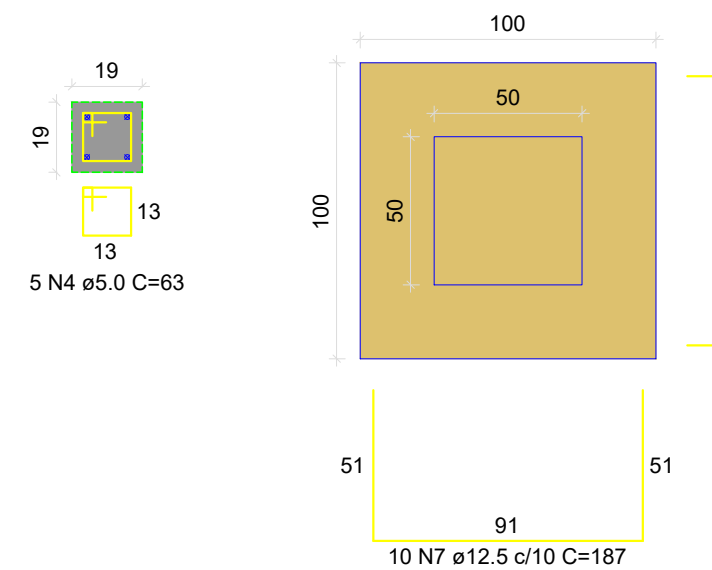


DETALHE DO PILAR
ESC 1:20



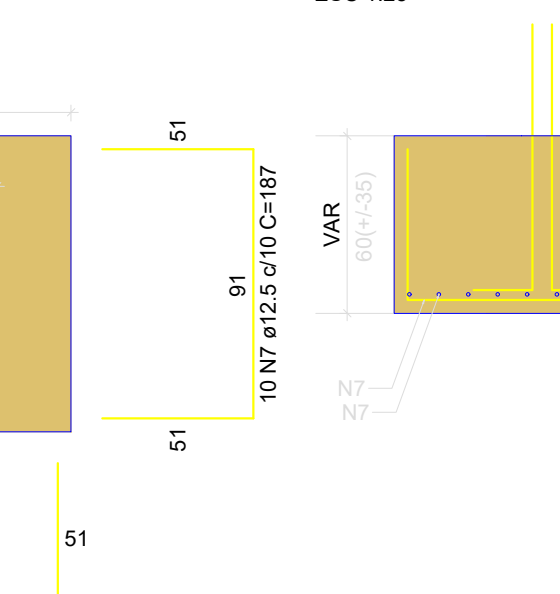
S33

PLANTA
ESC 1:25

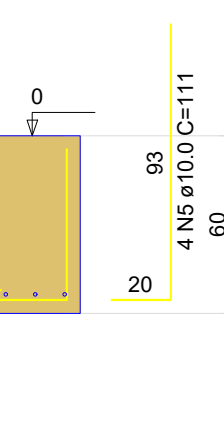


Solo com capacidade de suporte > 2.50 kgf/cm²
Solo compactado sobre a sapata
peso específico > 1600.00 kgf/m³

CORTE
ESC 1:25

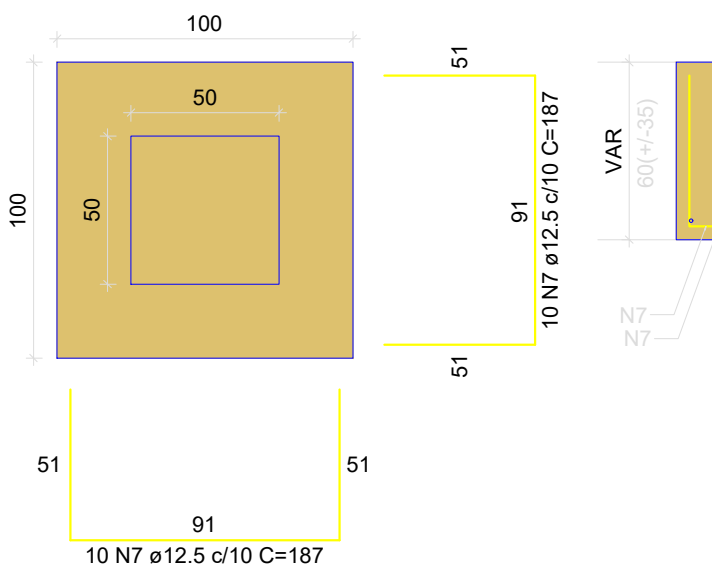


DETALHE DO PILAR
ESC 1:20



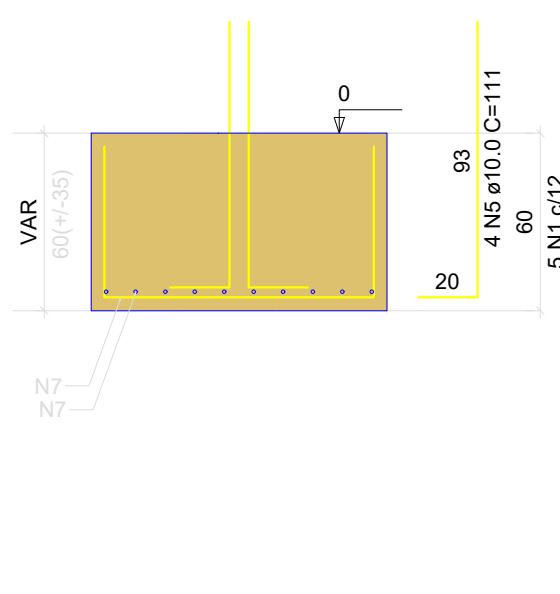
S34

PLANTA
ESC 1:25

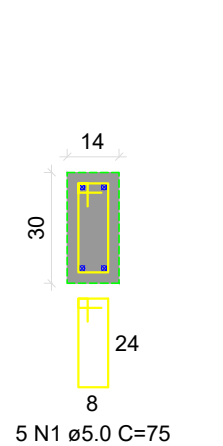


Solo com capacidade de suporte > 2.50 kgf/cm²
Solo compactado sobre a sapata
peso específico > 1600.00 kgf/m³

CORTE
ESC 1:25

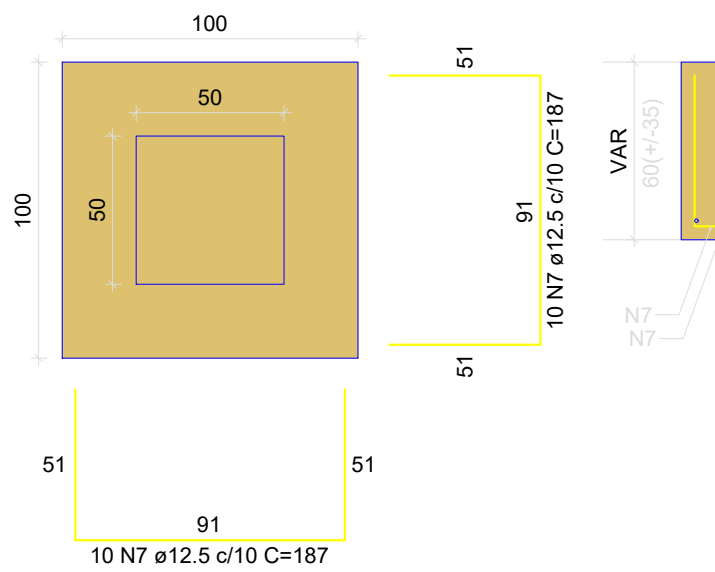


DETALHE DO PILAR
ESC 1:20



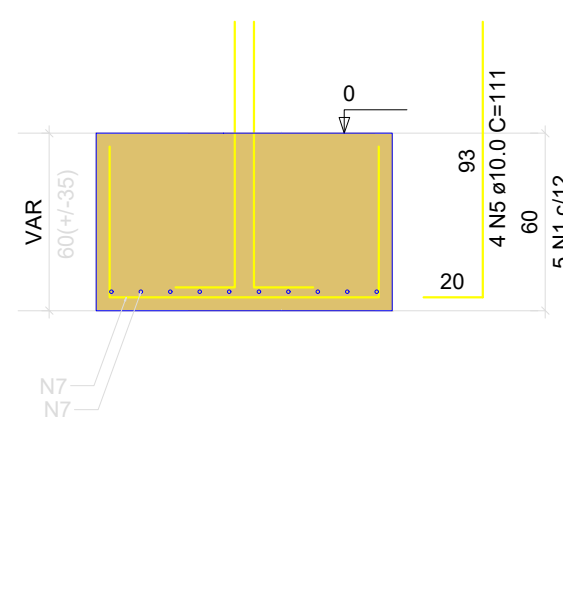
S35

PLANTA
ESC 1:25

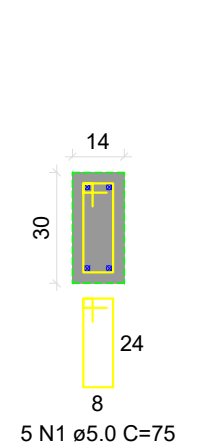


Solo com capacidade de suporte > 2.50 kgf/cm²
Solo compactado sobre a sapata
peso específico > 1600.00 kgf/m³

CORTE
ESC 1:25

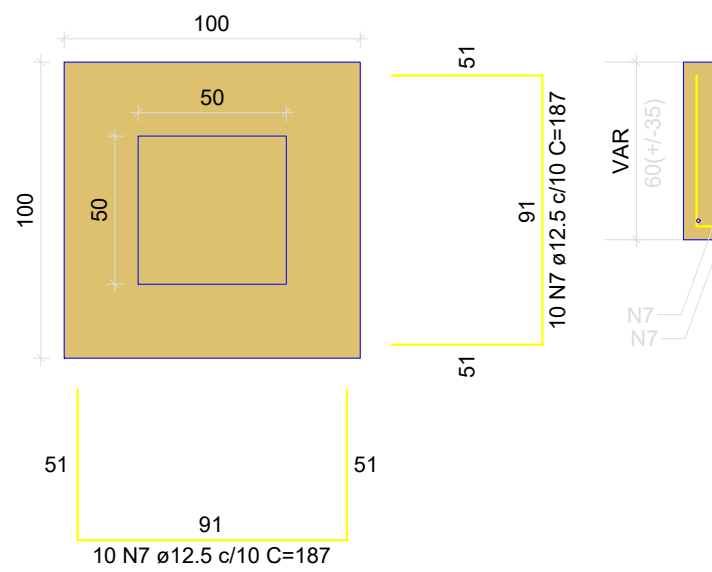


DETALHE DO PILAR
ESC 1:20



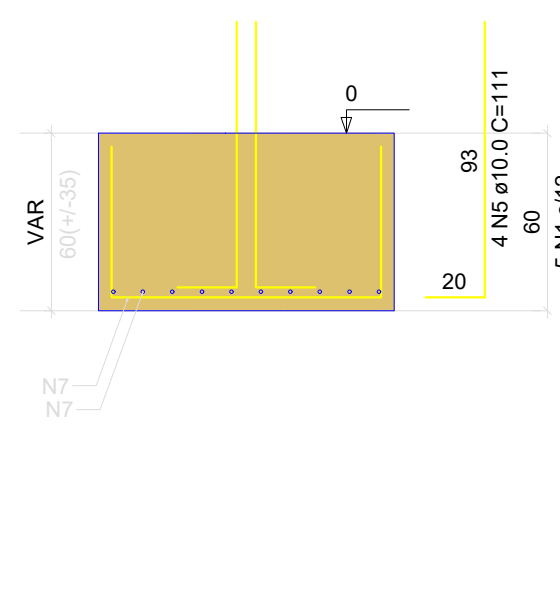
S36

PLANTA
ESC 1:25

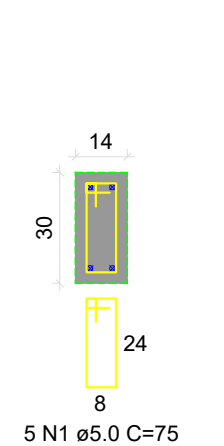


Solo com capacidade de suporte > 2.50 kgf/cm²
Solo compactado sobre a sapata
peso específico > 1600.00 kgf/m³

CORTE
ESC 1:25



DETALHE DO PILAR
ESC 1:20



DEPARTAMENTO DE ENGENHARIA

OBRA:
CRECHE INFÂNCIA FELIZ

ENDEREÇO DA OBRA:
RUA CEARÁ, ESQUINA COM A RUA SÃO CAETANO

CONTEÚDO:
PROJETO ESTRUTURAL

PROPRIETÁRIO:
Maycon Lopes Simioni
Prefeito do Município de Laranjal
CPF: 93.684.536/0001-80

DESENHO:
PAULO H.

ESCALA:
Indicada

RESPONSÁVEL TÉCNICO PELO PROJETO:
PAULO HENRIQUE RODRIGUES MEDEIROS
ENGENHEIRO CIVIL-CREA-PR 168.345/D



PRANCHA
03/06

Laranjal, 21 de maio de 2025.